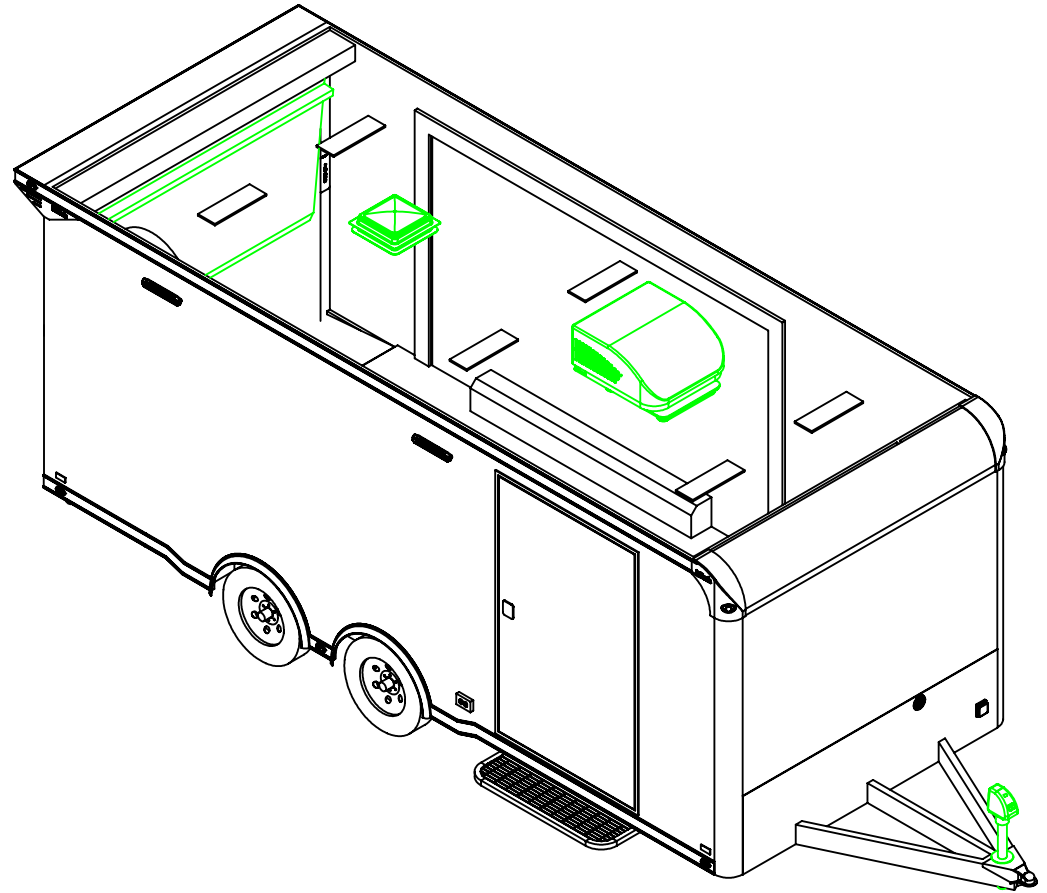
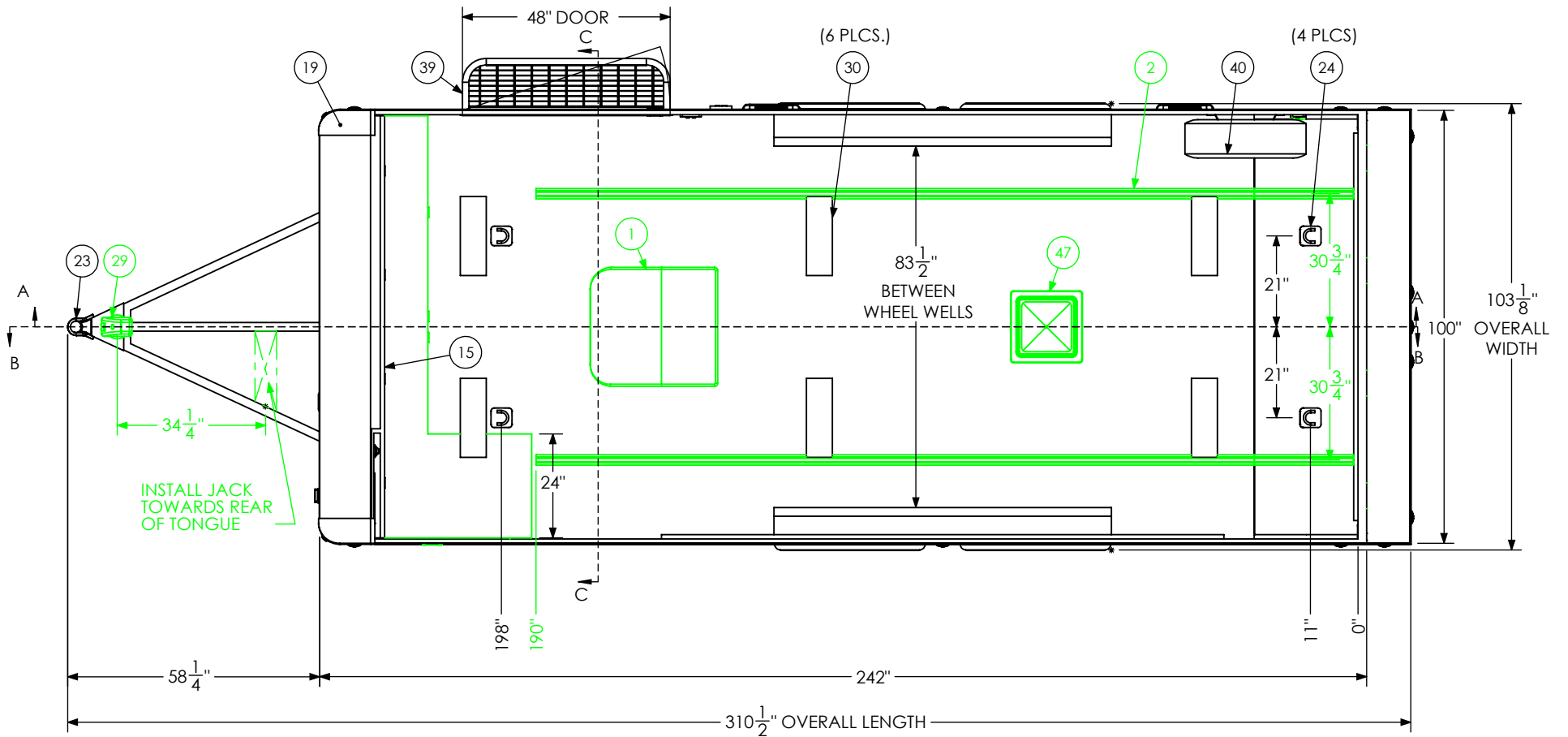


ITEM NO.	DESCRIPTION	NOTES	Options/QTY
1	Air Conditioner	13,500 BTU	1
2	Airline Track		2
3	Axle, Dexter	3500#, 0, 94HF, 78AB	2
14	BTL Cabinet, L-Base		1
15	BTL Cabinet, Overhead		1
16	Battery Box		1
17	Battery Vent		1
18	Bumpers	3"	1
19	Cast Corners		1
20	Caster Wheel		2
23	Coupler	2 5/16" Ball, 14,000#	1
24	D-Ring	5,000	4
25	Door, Entrance	48" x 78" RHS	1
26	Door, Generator	36" x 36"	1
29	Jack, Power	3500#	1
31	Load Center	30 Amp L/C - 45 Amp Conv	1
32	Loading Light - LED	13.7" 12V Loading Light	3
33	Motorbase Plug	30 Amp	1
34	Outlet	120V 20 Amp	4
35	Paddle Latch		2
36	Ramp Extension	48" x 84"	1
39	Slide Out Step	48" Wide	1
40	Spare Tire Assembly		1
41	Spring Assist		1
42	Switch	12v Cutoff	1
43	Switch	2 - 12V Switches	1
44	Switch	1 - 12V Switch	1
46	Tire	ST205/75R15	4
47	Vent, Roof		1
51	Winch Plate		1



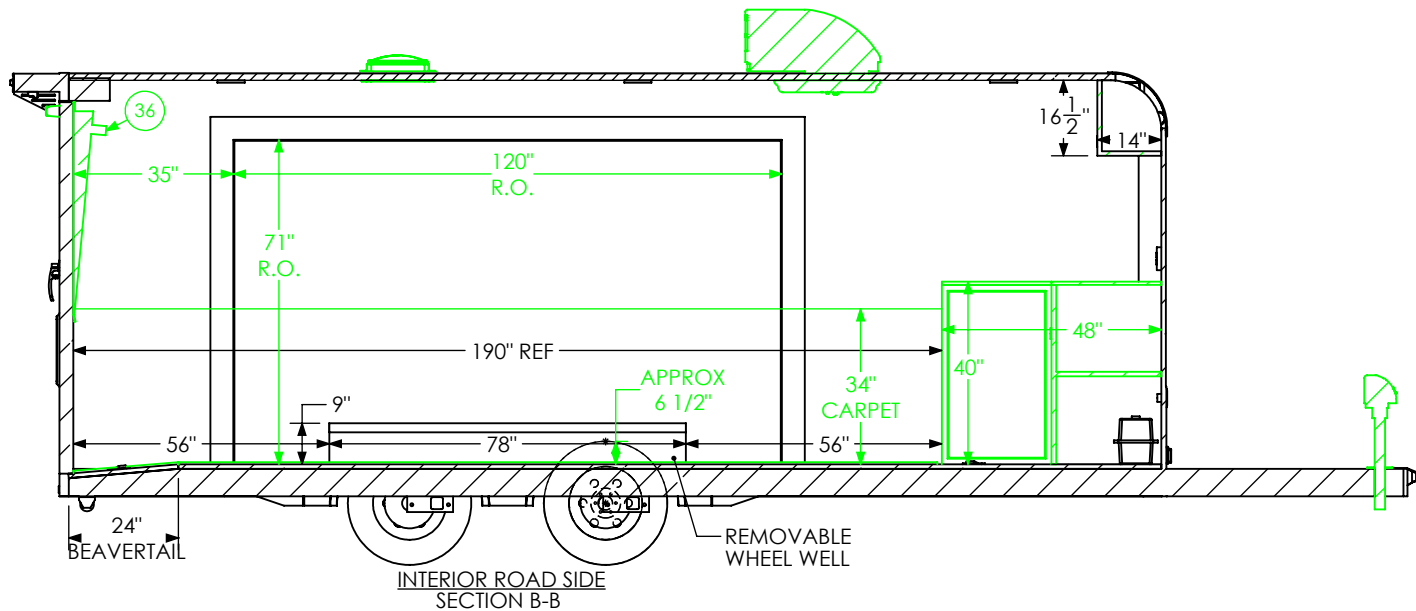
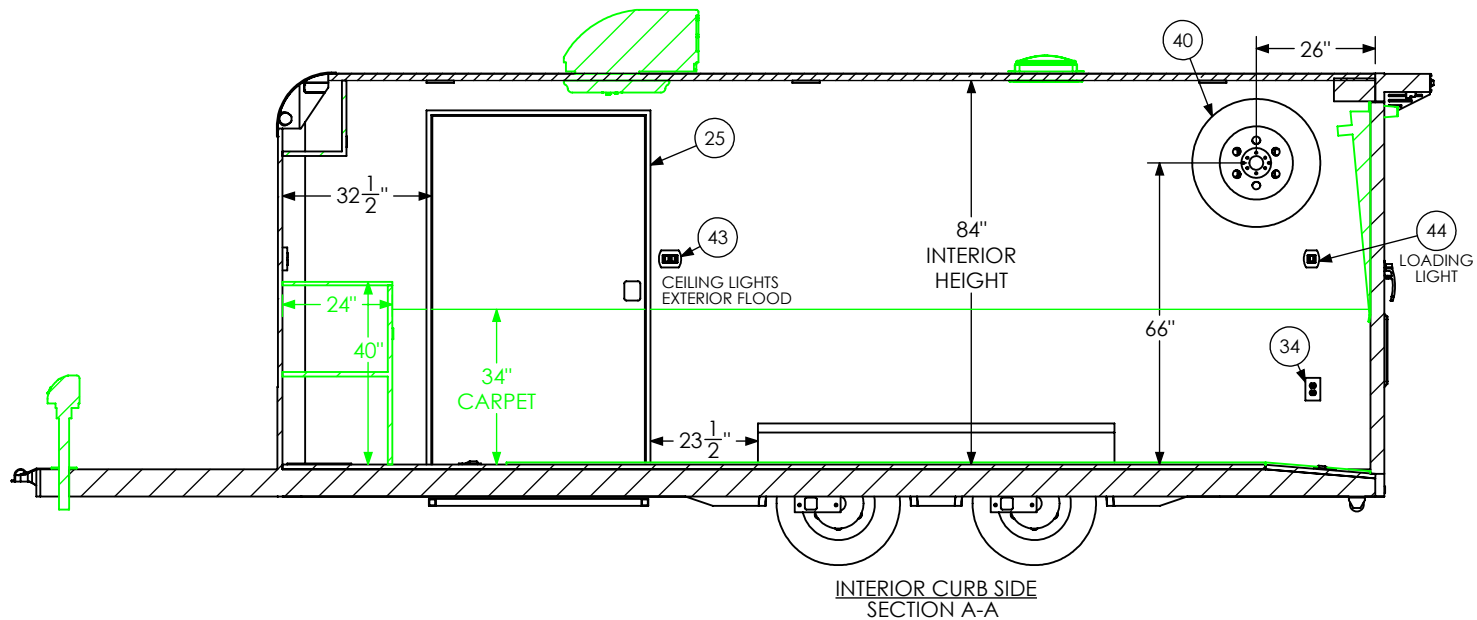
PROPRIETARY AND CONFIDENTIAL
 THE INFORMATION CONTAINED IN THIS DRAWING IS THE
 SOLE PROPERTY OF INTECH TRAILERS. ANY REPRODUCTION
 IN PART OR AS A WHOLE WITHOUT THE WRITTEN PERMISSION
 OF INTECH TRAILERS IS PROHIBITED.

SCALE: 1:48	NAME	DATE	inTech Trailers	
DRAWN	NjM	2/7/24	inTech BTL8.5x20TA2 - OPTIONS BOM	
ALL DIMENSIONS ARE IN INCHES AND ARE NOMINAL. DIMENSIONS ON ACTUAL TRAILER MAY VARY FROM WHAT IS SHOWN ON PRINT BASED ON ACTUAL FRAMING AND TRAILER STRUCTURE. UNLESS NOTED AS CRITICAL		DWG. NO.	SHEET 1 OF 5	REV.
		BTL8.5x20TA2 Trailer Assembly - Options		K



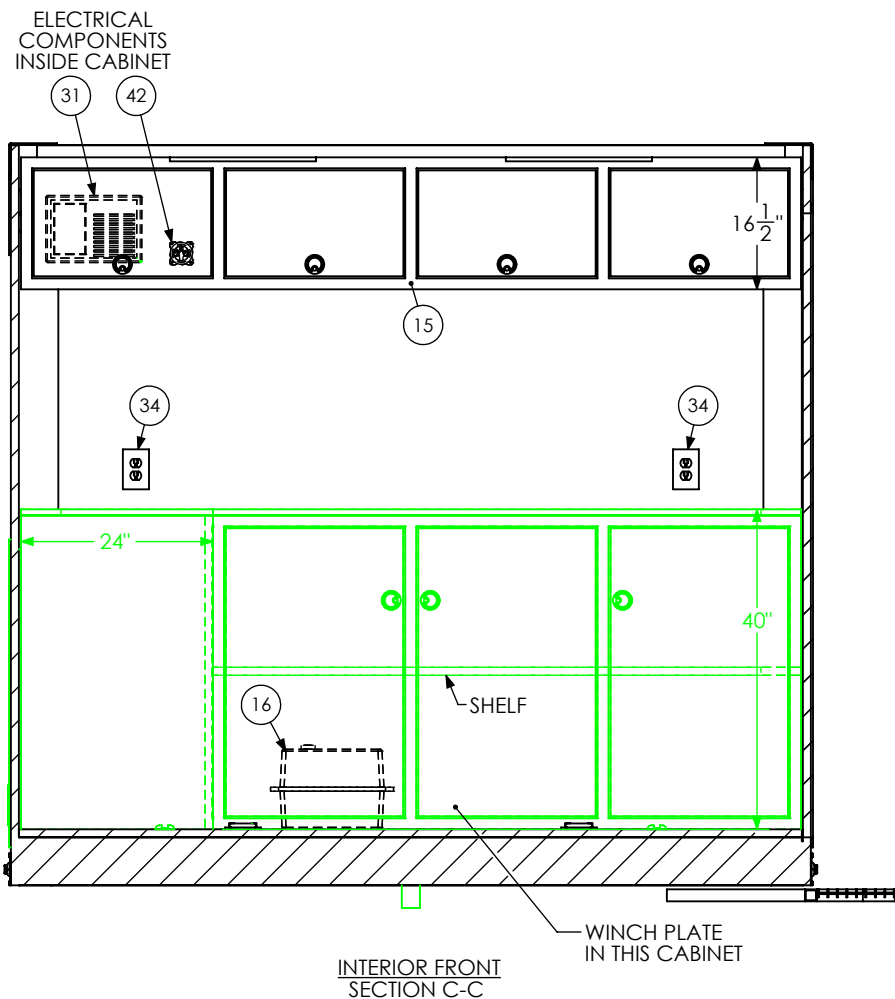
SCALE: 1:36	NAME	DATE	inTech Trailers	
DRAWN	NjM	2/7/24	inTech BTL8.5x20TA2 - OPTIONS FLOORPLAN	
ALL DIMENSIONS ARE IN INCHES AND ARE NOMINAL. DIMENSIONS ON ACTUAL TRAILER MAY VARY FROM WHAT IS SHOWN ON PRINT BASED ON ACTUAL FRAMING AND TRAILER STRUCTURE. UNLESS NOTED AS CRITICAL			DWG. NO. BTL8.5x20TA2 Trailer Assembly - Options	SHEET 2 OF 5 REV. K

PROPRIETARY AND CONFIDENTIAL
 THE INFORMATION CONTAINED IN THIS DRAWING IS THE
 SOLE PROPERTY OF INTECH TRAILERS. ANY REPRODUCTION
 IN PART OR AS A WHOLE WITHOUT THE WRITTEN PERMISSION
 OF INTECH TRAILERS IS PROHIBITED.



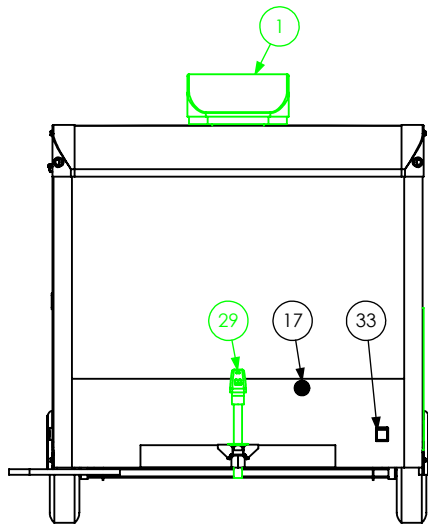
SCALE: 1:42	NAME	DATE	inTech Trailers	
DRAWN	NjM	2/7/24	inTech BTL8.5x20TA2 - OPTIONS INTERIOR SIDES	
ALL DIMENSIONS ARE IN INCHES AND ARE NOMINAL. DIMENSIONS ON ACTUAL TRAILER MAY VARY FROM WHAT IS SHOWN ON PRINT BASED ON ACTUAL FRAMING AND TRAILER STRUCTURE, UNLESS NOTED AS CRITICAL			DWG. NO. BTL8.5x20TA2 Trailer Assembly - Options	SHEET 3 OF 5 REV. K

PROPRIETARY AND CONFIDENTIAL
THE INFORMATION CONTAINED IN THIS DRAWING IS THE
SOLE PROPERTY OF INTECH TRAILERS. ANY REPRODUCTION
IN PART OR AS A WHOLE WITHOUT THE WRITTEN PERMISSION
OF INTECH TRAILERS IS PROHIBITED.

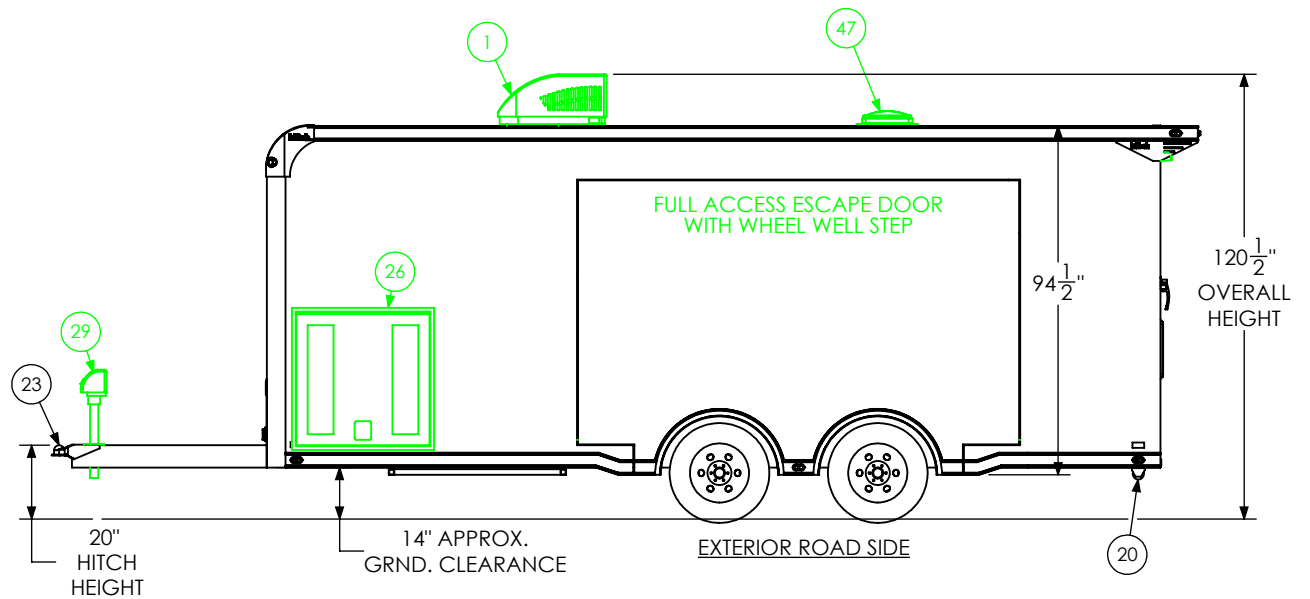


PROPRIETARY AND CONFIDENTIAL
THE INFORMATION CONTAINED IN THIS DRAWING IS THE
SOLE PROPERTY OF INTECH TRAILERS. ANY REPRODUCTION
IN PART OR AS A WHOLE WITHOUT THE WRITTEN PERMISSION
OF INTECH TRAILERS IS PROHIBITED.

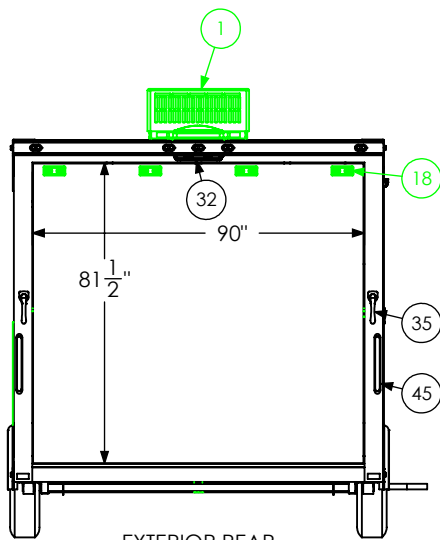
SCALE: 1:24	NAME	DATE	<i>inTech Trailers</i>	
DRAWN	NjM	2/7/24	inTech BTL8.5x20TA2 - OPTIONS INTERIOR FRONT	
ALL DIMENSIONS ARE IN INCHES AND ARE NOMINAL. DIMENSIONS ON ACTUAL TRAILER MAY VARY FROM WHAT IS SHOWN ON PRINT BASED ON ACTUAL FRAMING AND TRAILER STRUCTURE. UNLESS NOTED AS CRITICAL		DWG. NO.	SHEET 4 OF 5	REV.
		BTL8.5x20TA2 Trailer Assembly - Options		K



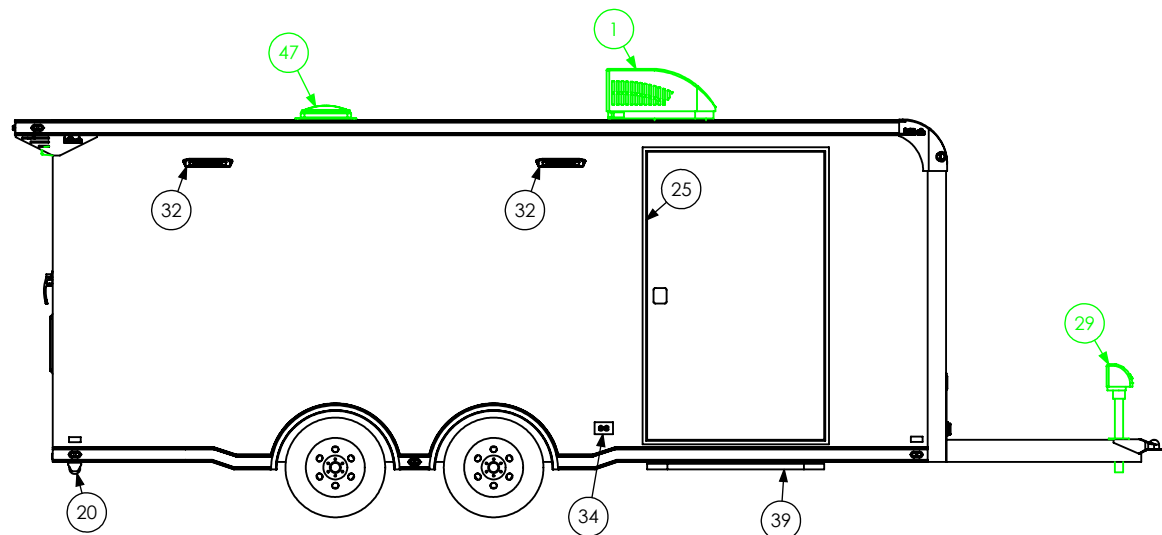
EXTERIOR FRONT



EXTERIOR ROAD SIDE



EXTERIOR REAR



EXTERIOR CURB SIDE

SCALE: 1:52	NAME	DATE	<i>inTech Trailers</i>	
DRAWN	NjM	2/7/24	inTech BTL8.5x20TA2 - OPTIONS EXTERIOR	
ALL DIMENSIONS ARE IN INCHES AND ARE NOMINAL. DIMENSIONS ON ACTUAL TRAILER MAY VARY FROM WHAT IS SHOWN ON PRINT BASED ON ACTUAL FRAMING AND TRAILER STRUCTURE, UNLESS NOTED AS CRITICAL			DWG. NO. BTL8.5x20TA2 Trailer Assembly - Options	SHEET 5 OF 5 REV. K

PROPRIETARY AND CONFIDENTIAL
 THE INFORMATION CONTAINED IN THIS DRAWING IS THE
 SOLE PROPERTY OF INTECH TRAILERS. ANY REPRODUCTION
 IN PART OR AS A WHOLE WITHOUT THE WRITTEN PERMISSION
 OF INTECH TRAILERS IS PROHIBITED.